



BAUER



2021 TEAM UNITY



WHAT IS TEAM UNITY?

Bauer has developed a program that is committed to outfitting individual teams and associations both on and off the ice to create a unified look. By providing a one-stop solution, this program is now easily accessible to all levels and age groups looking to build their identity and elevate their game.



CONTENTS

TEAM APPAREL.....	3
PANTS.....	11
GLOVES.....	17
HELMETS.....	23
BAGS.....	29
GOAL.....	33
UNIFORMS.....	38
TEAM STICK.....	41
ADDITIONAL INFORMATION.....	42



APPAREL



BAUER SUPREME HOODED PUFFER JACKET

COLOR	SR MATERIAL #	SR SIZES	YTH MATERIAL #	YTH SIZES
Black	[1056842]	XS, S, M, L, XL, XXL, XXXL	[1056844]	XXS, XS, S, M, L, XL
Grey	[1057811]	XS, S, M, L, XL, XXL, XXXL	[11057812]	XXS, XS, S, M, L, XL
Navy	[1057798]	XS, S, M, L, XL, XXL, XXXL	[1057799]	XXS, XS, S, M, L, XL

FEATURES AND TECHNOLOGY

Fabric Content	100% Nylon, Lining/Fill: 100% Polyester
Fit	Tapered hockey fit
Features	BAUER silicone patch on wearer's left sleeve, Screen printed logo on wearer's right chest PrimaLoft® insulation High-quality YKK® zippers
Customization	Can be post embellished



2021 BAUER TEAM UNITY | 3



BAUER SUPREME LIGHTWEIGHT JACKET

COLOR	SR MATERIAL #	SR SIZES	YTH MATERIAL #	YTH SIZES
Black	[1056586]	XS, S, M, L, XL, XXL, XXXL	[1056589]	XXS, XS, S, M, L, XL
Grey	[1056535]	XS, S, M, L, XL, XXL, XXXL	[1056511]	XXS, XS, S, M, L, XL
Navy	[1056587]	XS, S, M, L, XL, XXL, XXXL	[1056537]	XXS, XS, S, M, L, XL

FEATURES AND TECHNOLOGY

Fabric Content	100% Polyester Water Resistant
Fit	Tapered hockey fit
Features	BAUER screenprinted logo on left sleeve, right chest, and back neck High-quality YKK® zippers and mesh venting on back On seam and right chest pockets Raglan sleeve with adjustable cuff
Customization	Can be post embellished



BAUER SUPREME LIGHTWEIGHT PANT

COLOR	SR MATERIAL #	SR SIZES	YTH MATERIAL #	YTH SIZES
Black	[1056699]	XS, S, M, L, XL, XXL	[1056680]	XXS, XS, S, M, L, XL
Grey	[1056679]	XS, S, M, L, XL, XXL	[1056712]	XXS, XS, S, M, L, XL
Navy	[1056678]	XS, S, M, L, XL, XXL	[1056711]	XXS, XS, S, M, L, XL

FEATURES AND TECHNOLOGY

Fabric Content	100% Polyester Water Resistant
Fit	Tapered hockey fit
Features	BAUER screen-printed logo on left lower leg and right thigh On seam pockets with zippers and security pocket on right thigh Adjustable draw-cord waist
Customization	Can be post embellished



BAUER SUPREME MIDWEIGHT JACKET

COLOR	SR MATERIAL #	SR SIZES	YTH MATERIAL #	YTH SIZES
Black	[1056512]	XS, S, M, L, XL, XXL	[1056672]	XXS, XS, S, M, L, XL
Grey	[1056514]	XS, S, M, L, XL, XXL	[1056674]	XXS, XS, S, M, L, XL
Navy	[1056513]	XS, S, M, L, XL, XXL	[1056673]	XXS, XS, S, M, L, XL
Red	[1056515]	XS, S, M, L, XL, XXL	[1056676]	XXS, XS, S, M, L, XL

FEATURES AND TECHNOLOGY

Fabric Content	100% Polyester Water Resistant
Fit	Tapered hockey fit
Features	BAUER screen-printed logo on left sleeve, right chest, and back neck High-quality YKK® zippers and fleece lining On seam and right chest pockets Adjustable sleeve cuffs
Customization	Can be post embellished



BAUER SUPREME HEAVYWEIGHT JACKET

COLOR	SR MATERIAL #	SR SIZES	YTH MATERIAL #	YTH SIZES
Black	[1056704]	XS, S, M, L, XL, XXL	[1056706]	XXS, XS, S, M, L, XL
Grey	[1056723]	XS, S, M, L, XL, XXL	[1056668]	XXS, XS, S, M, L, XL
Navy	[1056707]	XS, S, M, L, XL, XXL	[1056671]	XXS, XS, S, M, L, XL

FEATURES AND TECHNOLOGY

Fabric Content	100% Polyester Water Resistant
Fit	Tapered hockey fit
Features	BAUER screen-printed logo on left sleeve and right chest High-quality YKK® zippers and polyester insulation On seam and right chest pockets Raglan sleeve with adjustable cuff and zip off removable hood
Customization	Can be post embellished



BAUER VAPOR FLEECE 1/4 ZIP

COLOR	SR MATERIAL #	SR SIZES	YTH MATERIAL #	YTH SIZES
Black	[1056716]	XS, S, M, L, XL, XXL	[1056788]	XXS, XS, S, M, L, XL
Heather Grey	[1056787]	XS, S, M, L, XL, XXL	[1056758]	XXS, XS, S, M, L, XL
Navy	[1056784]	XS, S, M, L, XL, XXL	[1056790]	XXS, XS, S, M, L, XL
Heather Red	[1056785]	XS, S, M, L, XL, XXL	[1056791]	XXS, XS, S, M, L, XL

FEATURES AND TECHNOLOGY

Fabric Content	100% Polyester
Fit	Tapered hockey fit
Features	BAUER screen-printed logo on left sleeve and right chest High-quality YKK® zippers On seam pockets TPU bar-tacks
Customization	Can be post embellished

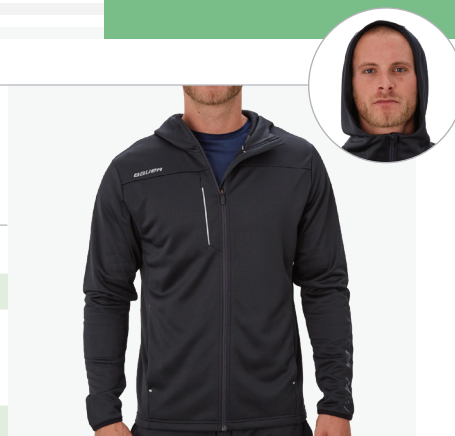


BAUER VAPOR FLEECE ZIP HOODIE

COLOR	SR MATERIAL #	SR SIZES	YTH MATERIAL #	YTH SIZES
Black	[1056822]	XS, S, M, L, XL, XXL	[1056826]	XXS, XS, S, M, L, XL
Heather Grey	[1056824]	XS, S, M, L, XL, XXL	[1056829]	XXS, XS, S, M, L, XL
Navy	[1056823]	XS, S, M, L, XL, XXL	[1056827]	XXS, XS, S, M, L, XL
Heather Red	[1056825]	XS, S, M, L, XL, XXL	[1056828]	XXS, XS, S, M, L, XL

FEATURES AND TECHNOLOGY

Fabric Content	100% Polyester
Fit	Tapered hockey fit
Features	BAUER screen-printed logo on left sleeve and right chest High-quality YKK® zippers On seam pockets and chest TPU bar-tacks
Customization	Can be post embellished



BAUER VAPOR FLEECE JOGGER PANT

COLOR	SR MATERIAL #	SR SIZES	YTH MATERIAL #	YTH SIZES
Black	[1056751]	XS, S, M, L, XL, XXL	[1056732]	XXS, XS, S, M, L, XL
Heather Grey	[1056717]	XS, S, M, L, XL, XXL	[1056756]	XXS, XS, S, M, L, XL
Navy	[1056722]	XS, S, M, L, XL, XXL	[1056757]	XXS, XS, S, M, L, XL

FEATURES AND TECHNOLOGY

Fabric Content	100% Polyester
Fit	Tapered hockey fit
Features	BAUER screen-printed logo at right hip Draw-cord at waist On seam pockets TPU bar-tacks
Customization	Can be post embellished



BAUER PERFECT HOODIE

COLOR	SR MATERIAL #	SR SIZES	YTH MATERIAL #	YTH SIZES
Black	[1056866]	XS, S, M, L, XL, XXL	[1056870]	XXS, XS, S, M, L, XL
Grey	[1056868]	XS, S, M, L, XL, XXL	[1056872]	XXS, XS, S, M, L, XL
Navy	[1056867]	XS, S, M, L, XL, XXL	[1056873]	XXS, XS, S, M, L, XL
Red	[1056869]	XS, S, M, L, XL, XXL	[1056871]	XXS, XS, S, M, L, XL

FEATURES AND TECHNOLOGY

Fabric Content	100% Polyester
Fit	Tapered hockey fit
Features	BAUER screen-printed logo on left sleeve and right chest High-quality YKK® zippers On seam and right chest pockets Lined hood and TPU bar-tacks
Customization	Can be post embellished



BAUER TEAM PIQUE POLO

COLOR	SR MATERIAL #	SR SIZES	YTH MATERIAL #	YTH SIZES
Black	[1059157]	XS, S, M, L, XL, XXL	[1059161]	XXS, XS, S, M, L, XL
Grey	[1059158]	XS, S, M, L, XL, XXL	[1059162]	XXS, XS, S, M, L, XL
Navy	[1059159]	XS, S, M, L, XL, XXL	[1059163]	XXS, XS, S, M, L, XL

FEATURES AND TECHNOLOGY

Fabric Content	100% Polyester Water Resistant
Fit	Tapered hockey fit
Features	BAUER heat transfer logo at wearer's left sleeve hem BAUER screen printed neck tape with integrated locker loop Tagless back neck label Side seam vents
Customization	Can be post embellished



BAUER VAPOR TEAM LS TECH TEE

COLOR	SR MATERIAL #	SR SIZES	YTH MATERIAL #	YTH SIZES
Heather Grey	[1058610]	XS, S, M, L, XL, XXL	[1058611]	XXS, XS, S, M, L, XL

FEATURES AND TECHNOLOGY

Fabric Content	100% Polyester
Fit	Tapered hockey fit
Features	BAUER heat transfer logo at wearer's left shoulder Small graphic detail at back body Tagless back neck label Forward shifted seams at shoulders and sides
Customization	Can be post embellished



BAUER VAPOR TEAM TECH TEE

COLOR	SR MATERIAL #	SR SIZES	YTH MATERIAL #	YTH SIZES
Black	[1056793]	XS, S, M, L, XL, XXL	[1056815]	XXS, XS, S, M, L, XL
Heather Grey	[1056795]	XS, S, M, L, XL, XXL	[1056817]	XXS, XS, S, M, L, XL
Navy	[1056808]	XS, S, M, L, XL, XXL	[1056816]	XXS, XS, S, M, L, XL
Heather Red	[1056812]	XS, S, M, L, XL, XXL	[1056819]	XXS, XS, S, M, L, XL

FEATURES AND TECHNOLOGY

Fabric Content	100% Polyester
Fit	Tapered hockey fit
Features	BAUER screen-printed logo on left sleeve Small graphic detail on back body Moisture wicking
Customization	Can be post embellished



BAUER CORE ATHLETIC SHORT

COLOR	SR MATERIAL #	SR SIZES	YTH MATERIAL #	YTH SIZES
Black	[1053476]	XS, S, M, L, XL	[1053477]	XS, S, M, L
Navy	[1054882]	XS, S, M, L, XL	[1054883]	XS, S, M, L

FEATURES AND TECHNOLOGY

Fabric Content	100% Polyester
Fit	Tapered hockey fit
Features	On-seam pockets Can be embellished
Customization	Can be post embellished



BAUER SUPREME HOODED PUFFER - WMN

COLOR	WMN MATERIAL #	SR SIZES
Black	[1057009]	XXS, XS, S, M, L, XL

FEATURES AND TECHNOLOGY

Fabric Content	100% Nylon
Fit	Hockey fit
Features	High quality YKK® Vislon® and coil zippers PrimaLoft® Insulation Zippered inside chest pocket Rib knit storm cuff on sleeve
Customization	Post embellishment access zipper



BAUER VAPOR FLEECE HOODIE - WMN

COLOR	WMN MATERIAL #	SR SIZES
Black	[1056962]	XXS, XS, S, M, L, XL

FEATURES AND TECHNOLOGY

Fabric Content	100% Polyester
Fit	Hockey fit
Features	BAUER screen printed logo at wearer's right chest BAUER screen printed logo at wearer's left sleeve On seam kangaroo pocket with TPU bartacks BAUER screen printed neck tape with integrated locker loop
Customization	Can be post embellished



BAUER VAPOR FLEECE JOGGER PANT - WMN

COLOR	WMN MATERIAL #	SR SIZES
Black	[1056951]	XXS, XS, S, M, L, XL

FEATURES AND TECHNOLOGY

Fabric Content	100% Polyester
Fit	Hockey fit
Features	BAUER heat transfer logo at wearer's right thigh Angled pockets with hidden YKK® zipper pocket on wearer's right Adjustable drawcord waist TPU bartacks
Customization	Can be post embellished



BAUER VAPOR TEAM TECH TEE - WMN

COLOR	WMN MATERIAL #	SR SIZES
Heather Grey	[1056942]	XXS, XS, S, M, L, XL

FEATURES AND TECHNOLOGY

Fabric Content	100% Polyester
Fit	Hockey fit
Features	BAUER heat transfer logo at wearer's left chest Tagless back neck label
Customization	Can be post embellished





COLORS

APPAREL SWATCHES

	Black	Heather/Grey/Charcoal	Navy	Heather/Red
Supreme Collection				
Vapor Collection				
Hooded Puffer Coat				
Perfect Hoodie				
Team Pique Polo				
Vapor Tech Tee				

HEADWEAR SWATCHES

	Black	Heather/Grey/Charcoal	Navy	Blue	Heather/Red/Maroon	Heather Green	Heather Orange	Heather Gold
9Forty Cap								
Team Knit Toque								
Team Marl Pom Knit								

APPAREL SIZING CHARTS

MEN (Measurements in US Standard & Metric)

SIZE		XXS	XS	S	M	L	XL	XXL	XXXL
CHEST	[IN]	-	35" - 36"	37" - 38"	39" - 40"	41" - 43"	44" - 46"	47" - 49"	50" - 53"
	[CM]	-	89 - 91	94 - 97	99 - 102	104 - 109	112 - 117	119 - 125	127 - 135
WAIST	[IN]	-	27" - 28"	29" - 30"	31" - 33"	34" - 35"	36" - 37"	38" - 40"	41" - 44"
	[CM]	-	69 - 71	74 - 76	79 - 84	86 - 89	91 - 94	97 - 102	104 - 112
SEAT	[IN]	-	34" - 35"	36" - 37"	38" - 39"	41" - 42"	43" - 44"	45" - 47"	48" - 51"
	[CM]	-	86 - 89	91 - 94	97 - 99	104 - 107	109 - 112	114 - 119	122 - 130
HEIGHT	[IN]	-	5'1" - 5'5"	5'5" - 5'9"	5'9" - 5'11"	5'11" - 6'1"	6'1" - 6'3"	6'3" - 6'5"	6'4" - 6'6"
	[CM]	-	155 - 165	165 - 175	175 - 180	180 - 185	185 - 191	191 - 196	193 - 198

WOMEN (Measurements in US Standard & Metric)

SIZE		XXS	XS (2)	S (4 - 6)	M (8 - 10)	L (12 - 14)	XL (16 - 18)	XXL	XXXL
CHEST	[IN]	28" - 30"	30" - 32"	32" - 34"	35" - 37"	38" - 40"	41" - 43"	-	-
	[CM]	71 - 76	76 - 81	81 - 86	89 - 94	97 - 102	104 - 109	-	-
WAIST	[IN]	21" - 23"	23" - 25"	25" - 26"	27" - 29"	30" - 32"	33" - 35"	-	-
	[CM]	53 - 58	58 - 64	64 - 66	69 - 74	76 - 81	84 - 89	-	-
SEAT	[IN]	31" - 33"	33" - 35"	35" - 37"	37" - 39"	40" - 42"	43" - 45"	-	-
	[CM]	79 - 84	84 - 89	89 - 94	94 - 99	102 - 107	109 - 114	-	-
HEIGHT	[IN]	4'10" - 5'2"	5' - 5'4"	5'1" - 5'5"	5'2" - 5'6"	5'3" - 5'7"	5'4" - 5'8"	-	-
	[CM]	147 - 158	152 - 163	155 - 165	157 - 168	160 - 170	163 - 173	-	-

YOUTH (Measurements in US Standard & Metric)

SIZE		XXS (4)	XS (5 - 6)	S (7 - 8)	M (10 - 12)	L (14 - 16)	XL (18)	XXL	XXXL
CHEST	[IN]	22" - 23"	24" - 26"	26" - 29"	29" - 32"	32" - 34.5"	34.5" - 35.5"	-	-
	[CM]	56 - 58	61 - 66	66 - 74	74 - 81	81 - 88	88 - 90	-	-
WAIST	[IN]	21" - 22"	22.5" - 23.5"	23.5" - 24.5"	24.5" - 25.5"	25.5" - 27.5"	27.5" - 29.5"	-	-
	[CM]	53 - 56	57 - 60	60 - 62	62 - 65	65 - 70	70 - 75	-	-
SEAT	[IN]	23" - 24"	24.5" - 25.5"	26.5" - 28.5"	28.5" - 30.5"	30.5" - 33.5"	33.5" - 35.5"	-	-
	[CM]	58 - 61	62 - 65	67 - 72	72 - 78	78 - 85	85 - 90	-	-
HEIGHT	[IN]	3'3" - 3'8"	3'9" - 4'2"	4'2" - 4'7"	4'7" - 4'11"	4'11" - 5'4"	5'4" - 5'6"	-	-
	[CM]	99 - 112	114 - 127	127 - 140	127 - 140	150 - 163	163 - 168	-	-

NEW ERA HEADWEAR SIZING CHART

SENIOR (Measurements in US Standard & Metric)

FITTED	6 7/8	7	7 1/8	7 1/4	7 3/8	7 1/2	7 5/8	7 3/4	7 7/8	8	8 1/8
[IN]	21 5/8	22	22 3/8	23 1/8	23 1/2	23 7/8	24 1/4	24 5/8	7 7/8	25	25 3/8
[CM]	54.9	55.8	56.8	57.7	58.7	59.6	60.6	61.5	62.5	63.5	64.5

YOUTH (Measurements in US Standard & Metric)

FITTED	6	6 1/8	6 1/4	6 3/8	6 1/2	6 5/8	6 3/4	6 7/8	7
[IN]	19	19 3/8	19 3/4	20 1/8	20 1/2	20 7/8	21 1/4	21 5/8	22
[CM]	48.2	49.2	50.1	51.1	52	53	53.9	54.9	55.8



BAUER NE TEAM 9FORTY ADJUSTABLE CAP

COLOR	SR MATERIAL #	SR SIZES	YTH MATERIAL #	YTH SIZES
Black	[1057023]	OSFM	[1057040]	OSFM
Grey	[1057042]	OSFM	[1057035]	OSFM
Navy	[1057045]	OSFM	[1057039]	OSFM
Red	[1057044]	OSFM	[1057037]	OSFM

FEATURES AND TECHNOLOGY

Fabric Content	100% Polyester; Grey = 85% Acrylic / 12% Wool / 3% Spandex [Front], 100% Polyester
Fit	New Era® 9Forty® adjustable cap
Features	BAUER flat embroidery on visor New Era® embroidery on left side
Customization	Can be post embellished



BAUER NE TEAM KNIT TOQUE

COLOR	SR MATERIAL #	SR SIZES
Black	[1057033]	OSFM
Charcoal	[1057015]	OSFM
Navy	[1057032]	OSFM
Maroon	[1057021]	OSFM

FEATURES AND TECHNOLOGY

Fabric Content	100% Acrylic
Fit	New Era® cuffed toque
Features	BAUER flat embroidery on visor New Era® embroidery on left side Fleece lined
Customization	Can be post embellished



BAUER NE TEAM MARL POM KNIT

COLOR	SR MATERIAL #	SR SIZES
Charcoal/Black	[1057011]	OSFM
Heather Grey/Navy	[1057014]	OSFM
Heather Grey/Red	[1057016]	OSFM
Heather Grey/Blue	[1057017]	OSFM
Heather Grey/Gold	[1057018]	OSFM
Heather Grey/Green	[1057019]	OSFM
Heather Grey/Orange	[1057020]	OSFM

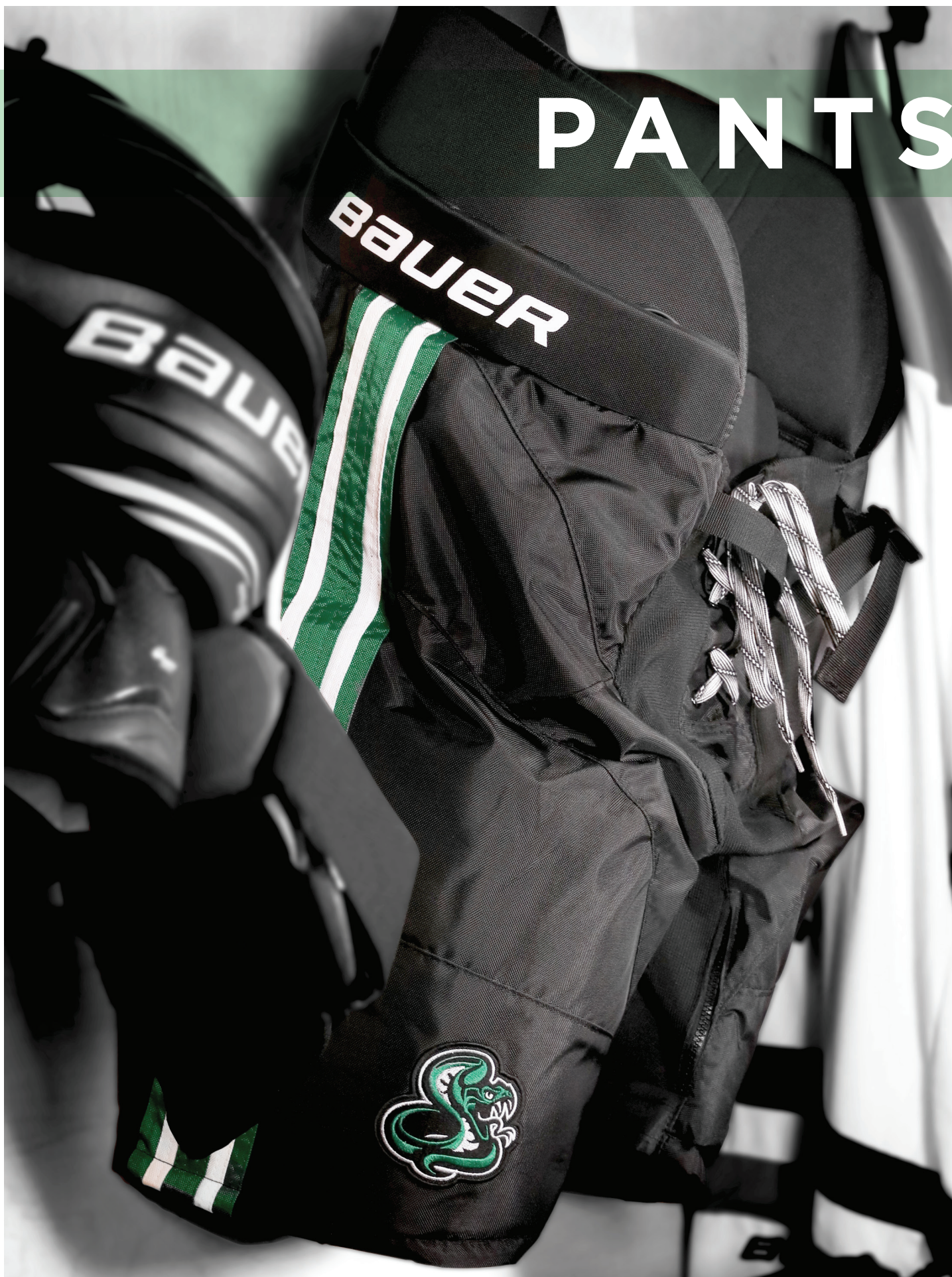
FEATURES AND TECHNOLOGY

Fabric Content	100% Acrylic
Fit	New Era® cuffed pom knit
Features	BAUER flat embroidery on visor New Era® embroidery on left side
Customization	Can be post embellished





PANTS



S19 SUPREME 2S PANT

SENIOR [1054976] S, M, L, XL
 JUNIOR [1054982] S, M, L, XL

FEATURES AND TECHNOLOGY

Fit	Anatomical Fit
Spine	Independent spine with HD Foam insert
Kidney	Molded with Poly insert
Hip	One-piece Full volume hip guard
Thigh Guard	One-piece thigh guard with stretchable leg gusset and zipper opening
Belt	MD Foam cover belt with dual cinch belt
Adjustability	Extension Fit + 1" with zipper closure
Shell	Pro level BYOD Nylon in thigh guard with overlay and stretch area
Liner	Extension Fit + 1" with zipper closure
Color	Black, Navy, Blue, Red



CUSTOM NEXUS ELITE PANT

SENIOR [1043702] S, M, L, XL, XXL
 SENIOR DS [1043783] S, M, L, XL, XXL

FEATURES AND TECHNOLOGY

Construction	Volume fit, pro level protection and quality Custom logo and stripes included in price.
Colors	Custom color menu
Embellishments	Direct Embroidered Bauer logo Embroidered Patch Team logo

MINIMUM OF 12 UNITS PER PANT / SHELL TYPE
 DIRECT SHIP ITEMS: RUSH 60 DAYS



DS PERFORMANCE SPEED PANT

SENIOR [1057749] S, ST, M, MT, L, LT, XL, XLT, XXL, XXLT
 JUNIOR [1057750] S, M, L, XL
 YOUTH [1057761] S, M, L

FEATURES AND TECHNOLOGY

Fit	Anatomical Fit
Spine	Integrated spine with HDPE insert
Kidney	Contour shape with HDPE insert
Hip	Full volume barrel fit with HDPE protection
Thigh Guard	Full volume split construction
Belt	Wrap around belt with cinching closure
Adjustability	Extension Fit + 1" through button adjustment
Shell	Pro level 850D Nylon with overlay and stretch zone
Liner	THERMO Max liner
Color	Custom Colors

MINIMUM OF 12 UNITS PER PANT / SHELL TYPE
 DIRECT SHIP ITEMS: RUSH 60 DAYS



CUSTOM NEXUS PERF PANT - WMNS

WOMEN [1043788] S, M, L, XL
 WOMEN DS [1043789] S, M, L, XL

MINIMUM OF 12 UNITS PER PANT / SHELL TYPE
 DIRECT SHIP ITEMS: RUSH 60 DAYS

FEATURES AND TECHNOLOGY

- Construction: Volume fit, pro level protection and quality
 Custom logo and stripes included in price.
- Colors: Custom color menu
- Embellishments: Direct Embroidered Bauer logo
 Embroidered Patch Team logo



CUSTOM NEXUS COVER SHELL

SENIOR DS [1043793] S, M, L, XL, XXL, XXXL
 JUNIOR DS [1043795] S, M, L, XL
 YOUTH DS [1043797] S, M, L

MINIMUM OF 12 UNITS PER PANT / SHELL TYPE
 DIRECT SHIP ITEMS: RUSH 60 DAYS

FEATURES AND TECHNOLOGY

- Construction: Designed to fit over a pant
 420 Denier nylon and vented back
 Custom logo and stripes included in price.
- Colors: Custom color menu
- Embellishments: Direct Embroidered Bauer logo
 Embroidered Patch Team logo



TEAM PANT COVER SHELL

SENIOR [1047791] S, M, L, XL, XXL, XXXL
 JUNIOR [1047792] S, M, L

FEATURES AND TECHNOLOGY

- Construction: Designed to fit over pant
 Skate lace closure system
 Vented back with 420 denier nylon shell
- Colors: Custom color menu
- Embellishments: Direct Embroidered Bauer logo
 Embroidered Patch Team logo



CUSTOM PANTS

HOW-TO CUSTOMIZE

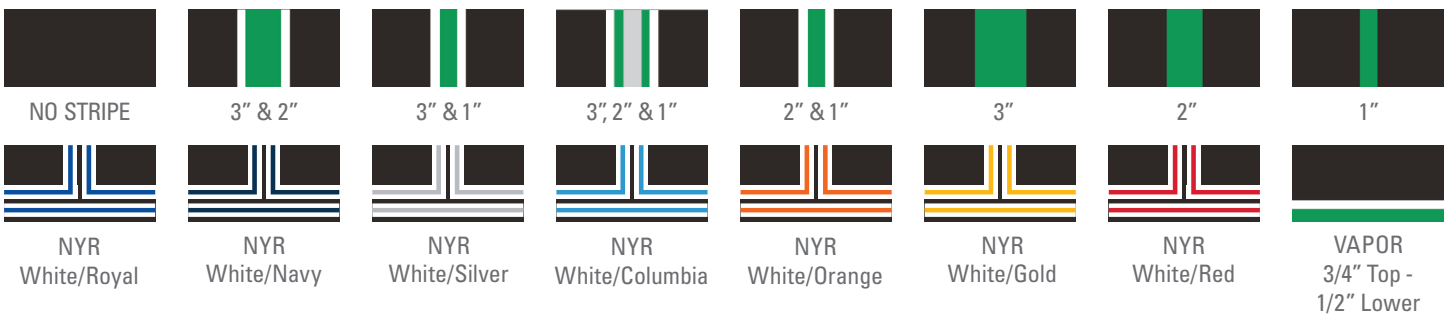
A CHOOSE YOUR PANT OR SHELL

SELECT YOUR PANT / PANT SHELL BASE COLOR FROM ONE OF OUR 17 BAUER APPROVED TEAM COLORS

- | | | | | | |
|-----------|--------------|------------|---------------|----------------|------------|
| 1. Black | 4. Dark Navy | 7. Royal | 10. Maroon | 13. Dark Green | 16. Orange |
| 2. White | 5. Navy | 8. Red | 11. Purple | 14. Green | 17. Brown |
| 3. Silver | 6. Blue | 9. Phoenix | 12. LA Purple | 15. Kelly | |

B STRIPING OPTIONS

CHOOSE A STRIPING PATTERN THAT BEST REPRESENTS YOUR TEAM OR ASSOCIATION AND THEN FINISH IT OFF WITH YOUR TEAM COLORS TO GIVE IT A TRULY UNIFIED LOOK



SELECT STRIPING COLOR FROM ONE OF OUR 25 BAUER APPROVED TEAM COLORS

- | | | | | | | | | |
|-----------|--------------|------------|---------------|----------------|------------|------------|--------------|-----------------|
| 1. Black | 4. Dark Navy | 7. Royal | 10. Maroon | 13. Dark Green | 16. Orange | 19. Vegas | 22. Gold | 25. Powder Blue |
| 2. White | 5. Navy | 8. Red | 11. Purple | 14. Green | 17. Brown | 20. Sand | 23. Teal | |
| 3. Silver | 6. Blue | 9. Phoenix | 12. LA Purple | 15. Kelly | 18. Pitt | 21. Yellow | 24. Columbia | |

C BAUER EMBROIDERY COLOR

CUSTOMIZE THE BAUER BRANDING ON THE PANT TO MATCH THE TEAM / STRIPING COLORS.
NOTE: WE CANNOT EXECUTE TONE-ON-TONE APPLICATIONS (I.E. RED PANT WITH RED BAUER BRANDING)



D EMBROIDERY TEAM LOGO

CUSTOMIZE YOUR TEAM'S PANT / SHELL BY ADDING AN EMBROIDERED LOGO TO THE RIGHT LEG OF THE PANT.



SIZING CHARTS

BAUER PLAYER PANTS (Measurements in US Standard & Metric)

SIZE	YOUTH			JUNIOR				SENIOR					WOMEN			
	S	M	L	S	M	L	XL	S	M	L	XL	XXL	S	M	L	XL
WEIGHT [LBS]	40-60	45-65	50-70	60-90	70-100	80-110	90-120	120-160	140-180	160-200	180-220	200+	90-120	100-130	110-140	120-150
HEIGHT [IN]	3'3"-4'1"	3'7"-4'4"	3'9"-4'7"	4'3"-4'8"	4'7"-5'	4'11"-5'4"	5'3"-5'8"	5'5"-5'9"	5'7"-5'11"	5'9"-6'1"	5'11"-6'3"	6'1"+	4'5"-5'3"	4'7"-5'5"	4'9"-5'7"	5'1"-5'9"
PANT SIZE [IN]	20"-22"	21"-23"	21"-23"	22"-24"	24"-26"	26"-28"	28"-30"	30"-34"	32"-36"	34"-38"	36"-40"	40"+	24"-27"	26"-29"	28"-31"	30"-33"

BAUER GOAL PANTS (Measurements in US Standard & Metric) *Measure waist circumference where your pants naturally sit, then subtract 3" for men, 4" for women

SIZE	YOUTH		JUNIOR		INTERMEDIATE			SENIOR			
	S/M	L/XL	S/M	L/XL	S	M	L	S	M	L	XL
WEIGHT [LBS]	40 - 53	46 - 57	55 - 68	62 - 79	77 - 90	88 - 99	97 - 130	99 - 150	130 - 170	150 - 190	180+
[KG]	18 - 24	21 - 26	25 - 31	28 - 36	35 - 41	40 - 45	44 - 59	45 - 68	59 - 77	68 - 86	82+
HEIGHT [FT]	3'5" - 3'11"	3'8" - 4'2"	4'1" - 4'8"	4'4" - 4'11"	4'10" - 5'2"	5'1" - 5'5"	5'4" - 5'7"	5'5" - 5'9"	5'7" - 5'11"	5'9" - 6'1"	5'11"+
[M]	1.04 - 1.19	1.12 - 1.27	1.24 - 1.42	1.32 - 1.5	1.47 - 1.57	1.55 - 1.65	1.63 - 1.7	1.65 - 1.75	1.7 - 1.8	1.75 - 1.85	1.8+
PANT SIZE [IN]	20" - 22"	21" - 23"	22" - 25"	23" - 26"	25" - 28"	27" - 30"	29" - 32"	30" - 34"	32" - 36"	34" - 38"	36"+
[CM]	51 - 56	53 - 58	56 - 64	58 - 66	64 - 71	69 - 76	74 - 81	76 - 86	81 - 91	86 - 97	91+

COLORS

PANT SWATCHES

 White	 Sand <small>(Stripe Only)</small>	 Pitt <small>(Stripe Only)</small>	 Vegas <small>(Stripe Only)</small>	 Brown
 Silver	 Black	 Dark Green	 Green	 Kelly
 Teal <small>(Stripe Only)</small>	 Powder Blue <small>(Stripe Only)</small>	 Columbia <small>(Stripe Only)</small>	 Royal	 Blue
 Navy	 Dark Navy	 Purple	 LA Purple	 Maroon
 Phoenix	 Red	 Orange	 Gold <small>(Stripe Only)</small>	 Yellow <small>(Stripe Only)</small>

DS S20 BAUER SPEED GOAL PANT

SENIOR	[1057893]	S, M, L, XL
INTERMEDIATE	[1057895]	S, M, L
JUNIOR	[1057894]	S/M, L/XL

MINIMUM OF 12 UNITS PER PANT / SHELL TYPE
DIRECT SHIP ITEMS: RUSH 60 DAYS

FEATURES AND TECHNOLOGY

Construction 2 Belt system
Leg protection - dynamic 2-flex with double adjustment pillows
Extension fit loop +1
Tucked free-flex (skate lace closure)

Colors Custom color menu

Embellishments Direct Embroidered Bauer logo
Embroidered Patch Team logo



S20 BAUER ELITE GOAL PANT

SENIOR	[1056879]	S, M, L, XL
SENIOR MTO	[1056547]	S, M, L, XL
INTERMEDIATE	[1056738]	S, M, L
INTERMEDIATE MTO	[1056548]	S, M, L

FEATURES AND TECHNOLOGY

Construction 2 Belt system
Leg protection - dynamic 2-flex with double adjustment pillows
Extension fit loop +1
Tucked free-flex (skate lace closure)

Colors Black, MTO - Navy and Red

Embellishments Direct Embroidered Bauer logo



CUSTOM GOAL PANT SHELL

SENIOR DS	[1041431]	S, M, L, XL, XXL
INTERMEDIATE DS	[1041432]	S, M, L

MINIMUM OF 12 UNITS PER PANT / SHELL TYPE
DIRECT SHIP ITEMS: RUSH 60 DAYS

FEATURES AND TECHNOLOGY

Construction Abrasion-resistant hip overlay (800 denier nylon/420 shell); Shell size is typically one size larger than pant size

Colors Custom color menu

Embellishments Direct Embroidered Bauer logo
Embroidered Patch Team logo



BAUER GOAL SHELL

SENIOR	[1048526]	S, M, L, XL, XXL
INTERMEDIATE/JR	[1048527]	S, M, L

FEATURES AND TECHNOLOGY

Construction Abrasion-resistant hip overlay (800 denier nylon/420 shell); Shell size is typically one size larger than pant size

Colors Black, Navy, Blue, Red

Embellishments Direct Embroidered Bauer logo





GLOVES



CUSTOM TEAM PRO SERIES

SENIOR [1058664] 14", 15"
 INTERMEDIATE [1058665] 12", 13"

FEATURES AND TECHNOLOGY

Backhand	Dual density foam with Hyperlite HD & PE insert
Fingers	Dual density foam with Hyperlite HD & PE insert
Thumb	2-Piece Flex thumb
Shell	PRO Lite Tex + Cable mesh
Cuff roll	Molded cuff roll with 3D embroidered logo
Palm	Dual Layer Micro suede Ivory PRO PALM
Gusset	Pro style finger tip gusset
Liner	HYPER SENSE finger liner + THERMOMAX backhand pad



4-Piece Back Roll

3D 2-Color Bauer Embroidery

Team Name & Logo Embroidery

Contrasting Thumb Binding

FIT PROFILE

Full volume fit - with a wider fit in the cuff and wider fit through the fingers, 4-roll pro team glove maximizes control with ample wrist mobility.

BAUER BRANDING

2-color 3D embroidery stitched directly into wrist cuff

EMBELLISHMENT

Team logo and name embroidered directly on the thumb of both gloves. Six color maximum with limited detail. Team name character limitations:

Senior: 13 / Junior: 12 / Youth: 10

UNIQUE DESIGNS

Added customizable options allow for teams to have truly unique designed gloves on the ice.

HOW-TO CUSTOMIZE

ZONE 1 BASE COLOR	ZONE 2 BINDING	ZONE 3 CUFF ROLL	ZONE 4 FINGERS	ZONE 5/6 BAUER LOGO	EMBELLISHMENT ZONE
<p>AVAILABLE IN 23 STANDARD BAUER COLORS</p> <p>BLK BLU SIL GLD NAV PUR YEL DGR VGS MAR BRN SND RED KEL WHT ORG TEA ROY CLB PHO PIT GRN LAP</p>					<p>LOGO FILL-COLOR</p> <p>LOGO OUTLINE-COLOR</p> <p>EMBROIDERED TEAM NAME & LOGO</p>

EXAMPLES OF POSSIBLE COLOR COMBOS



CUSTOM TEAM VAPOR PRO

SENIOR	[1058661]	14", 15"
INTERMEDIATE	[1058662]	12", 13"
JUNIOR	[1058663]	10", 11"



FEATURES AND TECHNOLOGY

Backhand	Dual density foam with Hyperlite HD & PE insert
Fingers	Dual density foam with Hyperlite HD & PE insert
Thumb	2-Piece Flex thumb
Shell	PRO Lite Tex + Cable mesh
Cuff roll	Molded cuff roll with 3D embroidered logo
Palm	Dual Layer Micro suede Ivory PRO PALM
Gusset	Pro style finger tip gusset
Liner	HYPER SENSE finger liner + THERMOMAX backhand pad

4-Piece Back Roll

3D 2-Color Bauer Embroidery

Team Name & Logo Embroidery

Contrasting Thumb Binding

FIT PROFILE

Tapered fit - with a wider fit in the cuff and standard fit through the fingers, pro team glove maximizes control with ample wrist mobility. With a 3-piece index finger construction, mobility is maximized.

BAUER BRANDING

2-color 3D embroidery stitched directly into wrist cuff

EMBELLISHMENT

Team logo and name embroidered directly on the thumb of both gloves. Six color maximum with limited detail. Team name character limitations:

Senior: 13 / Junior: 12 / Youth: 10

UNIQUE DESIGNS

Added customizable options allow for teams to have truly unique designed gloves on the ice.

HOW-TO CUSTOMIZE

ZONE 1 BASE COLOR	ZONE 2 BINDING	ZONE 3 CUFF ROLL	ZONE 4 FINGERS	ZONE 5/6 BAUER LOGO	EMBELLISHMENT ZONE																	
AVAILABLE IN 23 STANDARD BAUER COLORS					EMBROIDERED TEAM NAME & LOGO																	
BLK	BLU	SIL	GLD	NAV	PUR	YEL	DGR	VGS	MAR	BRN	SND	RED	KEL	WHT	ORG	TEA	ROY	CLB	PHO	PIT	GRN	LAP

EXAMPLES OF POSSIBLE COLOR COMBOS





TEAM VAPOR ELITE GLOVE

CUSTOM TEAM VAPOR ELITE

SENIOR	[1058666]	14", 15"
INTERMEDIATE	[1058667]	12", 13"
JUNIOR	[1058668]	10", 11"
YOUTH	[1058669]	8", 9"

FEATURES AND TECHNOLOGY

Backhand	MID density foam & PE insert
Fingers	MID density foam & PE insert
Thumb	2-Piece Flex thumb
Shell	PRO Lite Tex +
Cuff roll	Molded cuff roll with 3D embroidered logo
Palm	Dual Layer light grey CONNEKT palm
Gusset	PolyKnit gusset
Liner	THERMOMAX



34-Piece Back Roll

3D 2-Color Bauer Embroidery

Team Name Embroidery

Grip Comfort

FIT PROFILE

Tapered fit - with a wider fit in the cuff and standard fit through the fingers, team glove maximizes control with ample wrist mobility.

BAUER BRANDING

2-color 3D embroidery stitched directly into wrist cuff.

EMBELLISHMENT

Single color team name embroidered directly on the thumb of both gloves. Team name character limitations:

Senior: 13 / Junior: 12 / Youth: 10

INSIDE PALM

Dual Layer light grey CONNEKT palm.

HOW-TO CUSTOMIZE

ZONE 1 BASE COLOR	ZONE 2 CUFF ROLL	ZONE 3 BAUER LOGO FILL	ZONE 4 BAUER LOGO OUTLINE	EMBELLISHMENT ZONE																		
AVAILABLE IN 23 STANDARD BAUER COLORS				EMBROIDERED TEAM NAME																		
BLK	BLU	SIL	GLD	NAV	PUR	YEL	DGR	VGS	MAR	BRN	SND	RED	KEL	WHT	ORG	TEA	ROY	CLB	PHO	PIT	GRN	LAP

EXAMPLES OF POSSIBLE COLOR COMBOS



NEXUS - TEAM PRO GLOVE

SENIOR
JUNIOR

[1054288]
[1054287]

13", 14", 15"
10", 11", 12"

FEATURES AND TECHNOLOGY

Size/Construction Thermo Max Liner
Double Density Foam
Patented 2-piece Flex Lock Thumb
Traditional Volume Fit

Colors Black, Navy

Embellishments Direct Embroidered Bauer logo
Embroidered Patch Team logo



TEAM VAPOR PRO GLOVE

SENIOR
INTERMEDIATE
JUNIOR

[1058657]
[1058658]
[1058659]

14", 15"
12", 13"
10", 11"

FEATURES AND TECHNOLOGY

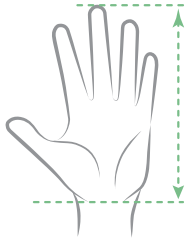
Size/Construction Dual density foam with Hyperlite HD & PE inserts
Flex lock thumb
Patented 2-piece Flex Lock Thumb
3-Piece index finger

Colors Black, Navy, Red



SIZING CHART

BAUER HOCKEY GLOVES (Measurements in US Standard & Metric)



Measure from tip of middle finger to wrist crease.

	YOUTH		JUNIOR		INTERMEDIATE		SENIOR	
SIZE	S (8")	M (9")	S (10")	M (11")	M (12")	L (13")	M (14")	L (15")
AGE	3-5	5-7	8-10	10-11	11-13	13+	14+	15+
WEIGHT	31 - 42lbs 14 - 19kg	40 - 53lbs 18 - 24kg	53 - 68lbs 24 - 31kg	66 - 79lbs 30 - 36kg	77 - 79lbs 36 - 45kg	99 - 150lbs 45 - 68kg	130 - 170lbs 59 - 77kg	150 - 190lbs 68 - 86kg
HEIGHT	3'0" - 3'6" 0.91 - 1.07m	3'5" - 3'11" 1.04 - 1.19m	4'2" - 4'8" 1.27 - 1.42m	4'7" - 4'11" 1.40 - 1.50m	4'10" - 5'5" 1.47 - 1.65m	5'5" - 5'9" 1.65 - 1.75m	5'7" - 5'11" 1.70 - 1.80m	5'9" - 6'1" 1.75 - 1.85m
LENGTH	4" - 5" 10.5 - 13cm	4" - 5" 11.5 - 14cm	4" - 5" 13 - 15.5cm	4" - 5" 14 - 16.5cm	4" - 5" 15.5 - 18cm	4" - 5" 16.5 - 19cm	4" - 5" 18 - 20.5cm	4" - 5" 19 - 22cm

COLORS

GLOVE SWATCHES







HELMETS



BAUER HYPERLITE HELMET

HELMET

[1058201]

S/M, M/L

FEATURES AND TECHNOLOGY

Performance	SHOCKLITE Foam Technology for lightweight impact protection Molded XRD® comfort liner; CSA, HECC, CE Certified
Customized Fit	FreeForm Adjustment system offers independent width and length adjustment
Comfort	Molded memory foam comfort liner with XRD® foam; Moisture channels to promote cooling
Colors	Black, Navy, Blue, Red, White



BAUER RE-AKT 150 HELMET

HELMET
COMBO[1055151]
[1055149]S, M, L
S, M, L

FEATURES AND TECHNOLOGY

Performance	VTX Technology, XRD® Foam Molded multi-density liner for maximum coverage CSA, HECC, CE certified
Customized Fit	FreeForm Adjustment system offers independent width and length adjustment
Comfort	Comfort pods conform to your head for comfort and protection
Combo	Includes a PROFILE III facemask Stainless steel construction with oval wire for enhanced vision Adjustable J-Clips
Colors	Helmets: Black, Navy, Blue, Red, White Combos: Black, White



BAUER RE-AKT 95 HELMET

HELMET
COMBO[1052686]
[1052687]S, M, L
S, M, L

FEATURES AND TECHNOLOGY

Performance	VTX Technology SUSPEND-TECH NG Liner system Foam molded, multi-density liner for maximum coverage CSA, HECC, CE certified
Customized Fit	Central tool-free adjustment Height-adjusting occipital lock
Comfort	XRD® Foam Molded memory foam comfort liner moisture channels to promote cooling
Combo	Includes a PROFILE III facemask Stainless steel construction with oval wire for enhanced vision Adjustable J-Clips CSA, HECC, CE certified
Colors	Helmets: Black, Navy, Blue, Red, White Combos: Black, White



BAUER RE-AKT 75 HELMET

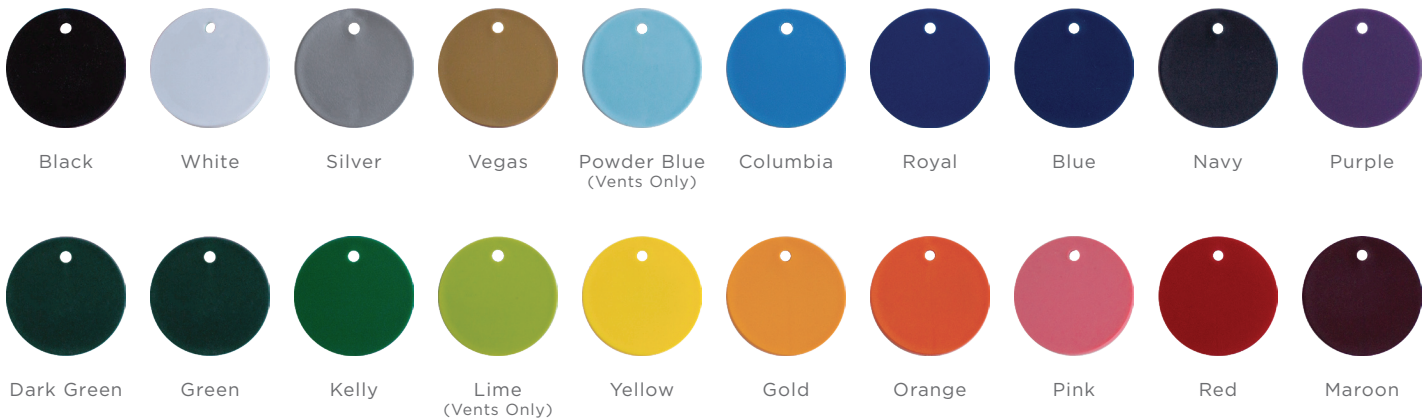
FEATURES AND TECHNOLOGY

Performance	Seven+ Technology™ Foam and XRD® Foam Multi-density impact management foam Ergo translucent ear covers CSA, HECC, CE certified			
Customized Fit	Molded occipital feature Tool-free adjustment			
Comfort	Comfort fit suspended liner system XRD® Foam inserts treated with MICROBAN® antimicrobial technology			
Combo	Includes a PROFILE III Facemask Stainless steel construction with oval wire for enhanced vision CSA, HECC, CE certified			
Stock	Helmets:	Black	[1047935]	
		Navy	[1047937]	
		Blue	[1047939]	
		Red	[1047938]	
		White	[1047936]	
		Black/White	[1047935]	
		Black/Red	[1047935]	
		White/Black	[1047936]	
	Combos:	Black	[1047935]	
		White	[1047964]	
Made-to-Order Tier 2	Helmets:	Black	[1047935]	Vents:
		Navy	[1047951]	Navy
		Blue	[1047949]	Blue
		Red	[1047950]	Red
		White	[1047952]	White
		Gold	[1047940]	Gold
		Maroon	[1047941]	Maroon
		Green	[1047947]	Green
		Royal	[1047948]	Royal
	Combos:	Black	[1047973]	Columbia
		Navy	[1047971]	Yellow
		Blue	[1047967]	Lime
		Red	[1047970]	Powder Blue
		White	[1047972]	Silver
		Gold	[1047955]	Purple
		Maroon	[1047956]	Orange
		Green	[1047968]	Vegas
		Royal	[1047969]	Pink
				Kelly
				Dark Green



COLORS

HELMET SWATCHES



BAUER PRO-CLIP: WAVE

CLEAR [1050366] LARGE

FEATURES AND TECHNOLOGY

Performance Updated interior anti-fog coating
Enhanced exterior anti-scratch coating
True Optics technology
CSA, HECC, CE certified

Construction High-impact polycarbonate shield
Exclusive QUICK-CLICK+ feature allows tool-less shield replacement
Wave Cut

Colors Clear



BAUER PRO-CLIP: STRAIGHT

CLEAR [1050354] MEDIUM
SMOKE [1050365] MEDIUM

FEATURES AND TECHNOLOGY

Performance Updated interior anti-fog coating
Enhanced exterior anti-scratch coating
True Optics technology
CSA, HECC, CE certified

Construction High-impact polycarbonate shield
Exclusive QUICK-CLICK+ feature allows tool-less shield replacement
Wave Cut

Colors Clear



BAUER PRO-CLIP: REPL LENS (2 SET)

CLEAR [1050368] MEDIUM

FEATURES AND TECHNOLOGY

Performance Updated interior anti-fog coating
Enhanced exterior anti-scratch coating
True Optics technology
CSA, HECC, CE certified
2 replacement lenses

Construction High-impact polycarbonate shield
Exclusive QUICK-CLICK+ feature allows tool-less shield replacement
Straight Cut

Colors Clear



BAUER PROFILE II FACEMASK

[1043047] XS, S, M, L

FEATURES AND TECHNOLOGY

Performance Dual density floating chin cup with moisture channels
CSA, HECC, CE certified

Construction Classic design profile with flat shape
Premium design has enhanced visual areas with patented oval wire

Colors Black, IS (Black Outside / White Inside), Silver, White



BAUER CONCEPT 3 FULL VISOR

SR [1041010]
JR [1041011]

FEATURES AND TECHNOLOGY

Performance Interior anti-fog coating; Enhanced, exterior anti-scratch coating;
Sr floating chin-cup
BAUER Helmet bag included; CSA, HECC, CE certified

Construction High-impact polycarbonate shield; Strategic vent locations; Expanded visual area

Colors Clear



DS BAUER HYPERLITE HELMET

HELMET [1058205] S/M, M/L

FEATURES AND TECHNOLOGY

Performance	SHOCKLITE Foam Technology for lightweight impact protection Molded XRD® comfort liner; CSA, HECC, CE Certified
Customized Fit	FreeForm Adjustment system offers independent width and length adjustment
Comfort	Molded memory foam comfort liner with XRD® foam; Moisture channels to promote cooling
Colors	Black, Navy, Blue, Red, White



DS BAUER RE-AKT 150 HELMET

HELMET COMBO [1055154] [1055141] S, M, L S, M, L

FEATURES AND TECHNOLOGY

Performance	VTX Technology, XRD® Foam Molded multi-density liner for maximum coverage CSA, HECC, CE certified
Customized Fit	FreeForm Adjustment system offers independent width and length adjustment
Comfort	Comfort pods conform to your head for comfort and protection
Combo	Includes a PROFILE III facemask Stainless steel construction with oval wire for enhanced vision Adjustable J-Clips
Custom Colors	Black, Navy, Blue, Red, White, Gold, Maroon, Phoenix, Wine, LA Purple, Green, Kelly, Dark Green, Royal, Brown, Vegas, Silver, Vegas Grey



DS BAUER RE-AKT 95 HELMET

HELMET COMBO [1052693] [1052692] S, M, L S, M, L

FEATURES AND TECHNOLOGY

Performance	VTX Technology SUSPEND-TECH NG Liner system Foam molded, multi-density liner for maximum coverage CSA, HECC, CE certified
Customized Fit	Central tool-free adjustment Height-adjusting occipital lock
Comfort	XRD® Foam Molded memory foam comfort liner moisture channels to promote cooling
Combo	Includes a PROFILE III facemask Stainless steel construction with oval wire for enhanced vision Adjustable J-Clips
Custom Colors	Black, Navy, Blue, Red, White, Gold, Maroon, Phoenix, Wine, LA Purple, Green, Kelly, Dark Green, Royal, Brown, Vegas, Silver, Vegas Grey



DS BAUER 4500 HELMET

HELMET
COMBO

[1036391]
[1036393]

S, M, L
S, M, L

FEATURES AND TECHNOLOGY

Performance	Dual density foam Dual-ridge crown Ergo translucent ear covers CSA, HECC, CE certified
Customized Fit	Quick tool adjustment
Comfort	Floating pro ear loops
Combo	Includes a PROFILE II facemask; Stainless steel construction with oval wire for enhanced vision Adjustable J-Clips
Colors	Black, Navy, Blue, Red, White, Gold, Maroon, Phoenix, Wine, LA Purple, Green, Kelly, Dark Green, Royal, Brown, Vegas, Silver, Vegas Grey



SIZING CHART: SIZING AND CERTIFICATION

BAUER HELMETS AND COMBOS (Measurements in US Standard & Metric)

Fitting

1. Open helmet to its largest setting and position on the head so that the front edge of the helmet is one finger width above the eyebrows.
2. Slide the front and back portions of the helmet together until a comfortable, snug fit is achieved.
3. Tighten the adjustment mechanism.

Players should only use CSA, HECC and CE certified helmets. These helmets have stickers affixed that indicate their compliance with the applicable standards.

	inches	20.0	20.2	20.4	20.6	20.8	21.0	21.2	21.4	21.6	21.8	22.0	22.2	22.4	22.6	22.8	23.0	23.2	23.4	23.6	23.8	24.0	24.2	24.4	24.6	24.8	25.0	25.2	25.4	25.6			
	cm	51.0	51.5	52.0	52.5	53.0	53.5	54.0	54.5	55.0	55.5	56.0	56.5	57.0	57.5	58.0	58.5	59.0	59.5	60.0	60.5	61.0	61.5	62.0	62.5	63.0	63.5	64.0	64.5	65.0			
	mm	510	515	520	525	530	535	540	545	550	555	560	565	570	575	580	585	590	595	600	605	610	615	620	625	630	635	640	645	650			
Model	Size																																
HYPERLITE	S/M																																
	M/L																																
RE-AKT 150	S																																
	M																																
	L																																
RE-AKT 95	S																																
	M																																
	L																																
RE-AKT 75	S																																
	M																																
	L																																
4500	S																																
	M																																
	L																																
	XL																																



BAGS

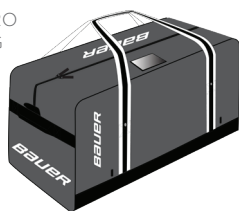


CUSTOM BAGS

HOW-TO CUSTOMIZE

A CHOOSE A STYLE

i) CUSTOM PRO CARRY BAG



ii) CUSTOM TEAM PRO DUFFEL

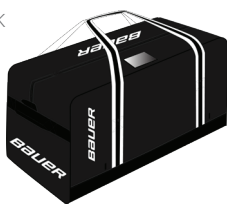


iii) CUSTOM BACKPACK

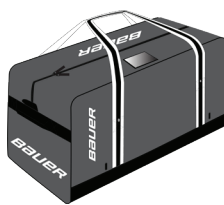


B CHOOSE A BAG COLOR

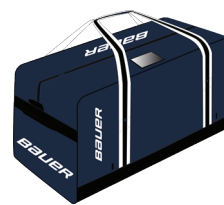
i) BLACK



ii) GREY



iii) NAVY



C CUSTOMIZE YOUR STRAP COLORS

*BACKPACK DOES NOT HAVE CUSTOM STRAPS

i) SELECT YOUR 2" AND 1" STRAP COLOR FROM ONE OF OUR 15 AVAILABLE TEAM -FOCUSED STRAP OPTIONS



- | | | | | |
|-----------|-----------|-----------|------------|--------------|
| 1. White | 4. Vegas | 7. Orange | 10. Purple | 13. Columbia |
| 2. Silver | 5. Yellow | 8. Red | 11. Navy | 14. Teal |
| 3. Black | 6. Gold | 9. Maroon | 12. Royal | 15. Green |

D ADD A TEAM LOGO

*TWO LOGOS PER BAG EXCEPT FOR THE BACKPACK

i) SUBMIT YOUR LOGO



ii) SELECT EMBELLISHMENT OPTION



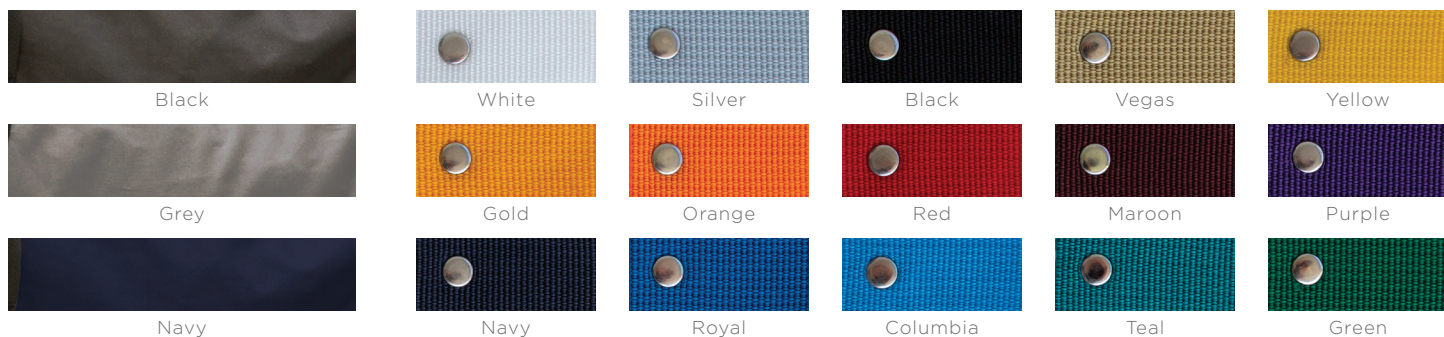
*INCLUDED IN CUSTOM PRICE



*UPGRADE

COLORS

BAG & STRAP SWATCHES



S20 CUSTOM PRO CARRY BAG

SENIOR	[1057078]	32" x 20" x 17"
SENIOR DS	[1057075]	32" x 20" x 17"
JUNIOR	[1057068]	30" x 18" x 15"
JUNIOR DS	[1057073]	30" x 18" x 15"
GOAL	[1057079]	40" x 22" x 22"
GOAL DS	[1057072]	40" x 22" x 22"

FEATURES AND TECHNOLOGY

Fabric Content	Heavy duty Pro-Tarp construction
Features	YKK Zipper Large main compartment with straight zipper Internal mesh organizer panels DryFlow Grommets and rivet reinforced HD webbing Player ID window
Colors	Black, Navy, Grey



S20 CUSTOM TEAM PRO DUFFEL

DS	[1057080]	22" x 12" x 12"
	[1057061]	22" x 12" x 12"

FEATURES AND TECHNOLOGY

Fabric Content	Heavy duty Pro-Tarp construction
Features	D-shaped opening main compartment Internal mesh organizer panel DryFlow Grommets and rivet reinforced HD webbing Player ID window
Colors	Black, Navy, Grey



S20 CUSTOM PRO 20 BACKPACK

DS	[1057081]	20.5" x 13.5" x 7.5"
	[1057082]	20.5" x 13.5" x 7.5"

FEATURES AND TECHNOLOGY

Fabric Content	Durable Pro-Tarp construction with Dura Hex ripstop accent material
Features	Large main pocket with separate wet/dry compartment Adjustable, anatomical shoulder strap
Colors	Black, Navy, Grey



S20 BAUER PRO CARRY BAG

COLOR	SR MATERIAL #	SR SIZE	JR MATERIAL #	JR SIZE	GOAL MATERIAL#	GOAL SIZE
Black	[1057064]	32" x 20" x 17"	[1057067]	30" x 18" x 15"	[1057069]	40" x 22" x 22"
Grey	[1057070]	32" x 20" x 17"	[1057083]	30" x 18" x 15"	[1057901]	40" x 22" x 22"
Navy	[1057071]	32" x 20" x 17"	[1057076]	30" x 18" x 15"	[1057902]	40" x 22" x 22"

FEATURES AND TECHNOLOGY

Fabric Content Heavy duty Pro-Tarp construction

Features YKK Zipper
Large main compartment with straight zipper
Internal mesh organizer panels
DryFlow Grommets and rivet reinforced HD webbing
Player ID window

Customization Can be post embellished



S21 BAUER TEAM DUFFLE BAG

[1058357]

FEATURES AND TECHNOLOGY

Fabric Content Heavy duty Pro-Tarp construction

Features Large main compartment with straight zipper; internal mesh organizer panels
Reinforced HD webbing; adjustable shoulder strap

Colors Black



BAUER PRO20 BACKPACK

[1056260]

FEATURES AND TECHNOLOGY

Fabric Content Durable Pro-Tarp construction with Dura Hex ripstop accent material

Features Large main pocket with separate wet/dry compartment
Adjustable, anatomical shoulder strap

Colors Black



TEAM STICK BAG

[1043309]

FEATURES AND TECHNOLOGY

Materials 600D polyester

Features Carries 50 sticks;
Large wheel base allows for easy movement

Colors Black



TEAM JERSEY BAG

[1043374]

FEATURES AND TECHNOLOGY

Materials 600D polyester

Features Carry the whole team's jerseys together

Colors Black





GOAL



S21 VAPOR 3X GOAL PAD (CUSTOM)

SENIOR	[1058945]	XS, S, M, L
SENIOR DS	[1058946]	XS, S, M, L
INTERMEDIATE	[1059012]	XS, S, M, L
INTERMEDIATE DS	[1059013]	XS, S, M, L

FEATURES AND TECHNOLOGY

Level	Perf
Material	C.O.R TECH PLUS Calf & Knee Landing
Comfort	Molded memory foam comfort liner with XRD® foam; Moisture channels to promote cooling
Core Insert	Dynamic Flex Core with CURV® composite thigh rise
Flex Profile	Flex point above and below the knee
Boot flex	FREE-FLEX 110 Degree Boot
Toe	Offset Elastic Toe System (1057047)
Leg Channel	Connekt Material
Knee Landing	STABILIFLEX KNEE BLOCK featuring Connekt Grip
Knee Wing	Adjustable knee wing
Strapping	Tune Fit 2.0 Strapping System
Calf Wrap	Aerolite with abrasion resistant material BALANCE
Calf Plate	PLATE Calf Pillow
Logos	Hot melt
Color	Custom



S21 VAPOR 3X CATCHER (CUSTOM)

SENIOR	[1058947]	XS, S, M, L
SENIOR DS	[1058948]	XS, S, M, L
INTERMEDIATE	[1059014]	XS, S, M, L
INTERMEDIATE DS	[1059015]	XS, S, M, L

FEATURES AND TECHNOLOGY

Level	Perf
Material	Catchlite palm and T-Trap
Cuff	CURV Reinforced cuff
Palm	Game Ready Pro Palm
Pocket	Double- T
Backcover Cuff	Free-Flex
Backhand	Full Adjustment for custom fit
Palm Liner	Connekt Grip
Color	Custom



S21 VAPOR 3X BLOCKER (CUSTOM)

SENIOR	[1058949]	REG, FRT
SENIOR DS	[1058950]	REG, FRT
INTERMEDIATE	[1059016]	REG, FRT
INTERMEDIATE DS	[1059017]	REG, FRT

FEATURES AND TECHNOLOGY

Level	Perf
Blocker Board	HD Foam with CURV Composite
Palm	14.5" Connekt palm
Finger Protection	Adjustable Finger Protection
Cuff	Asymmetrical Aerolite
Liner	Connekt
Color	Custom



SIZING CHARTS: FINDING THE RIGHT FIT

BAUER GOALIE PADS (Measurements in US Standard & Metric)

Our simplified sizing system helps you find the pad size that is a best fit for each player:

SENIOR	PAST SIZING	32	33	34	35	36	37
	PAD SIZING	X-SMALL	SMALL	MEDIUM	LARGE	XLARGE	XXLARGE
INTERMEDIATE	PAST SIZING	29	30	31	32	69.9	74
	PAD SIZING	X-SMALL	SMALL	MEDIUM	LARGE	31"	32"
JUNIOR	PAST SIZING	24	26	28	30	78.7	81.3
	PAD SIZING	X-SMALL	SMALL	MEDIUM	LARGE	35"	35.75"
YOUTH/PRODIGY	PAST SIZING		20	22	24	89	90.8
	PAD SIZING		SMALL	MEDIUM	LARGE		35.75"

BAUER CATCH GLOVE / BLOCKER (Measurements in US Standard & Metric)

HAND SIZE	CUSTOM PALM SIZING					INTERMEDIATE	YOUTH
		7.5" - 8"	7" - 7.5"	8" - 8.5"	7.5" - 8"	7" - 7.5"	6" - 7"
	19cm - 20.5cm	18cm - 19cm	20.5cm - 21.5cm	19cm - 20.5cm	18cm - 19cm	15cm - 18cm	14cm - 16.5cm
	STOCK	INTERMEDIATE	XLARGE	STOCK	INTERMEDIATE		
	CATCHER		BLOCKER				

BAUER GOAL PANTS (Measurements in US Standard & Metric) *Measure waist circumference where your pants naturally sit, then subtract 3" for men, 4" for women

SIZE	YOUTH		JUNIOR		INTERMEDIATE			SENIOR			
	S/M	L/XL	S/M	L/XL	S	M	L	S	M	L	XL
WEIGHT [LBS]	40 - 53	46 - 57	55 - 68	62 - 79	77 - 90	88 - 99	97 - 130	99 - 150	130 - 170	150 - 190	180+
[KG]	18 - 24	21 - 26	25 - 31	28 - 36	35 - 41	40 - 45	44 - 59	45 - 68	59 - 77	68 - 86	82+
HEIGHT [FT]	3'5" - 3'11"	3'8" - 4'2"	4'1" - 4'8"	4'4" - 4'11"	4'10" - 5'2"	5'1" - 5'5"	5'4" - 5'7"	5'5" - 5'9"	5'7" - 5'11"	5'9" - 6'1"	5'11+
[M]	1.04 - 1.19	1.12 - 1.27	1.24 - 1.42	1.32 - 1.5	1.47 - 1.57	1.55 - 1.65	1.63 - 1.7	1.65 - 1.75	1.7 - 1.8	1.75 - 1.85	1.8+
PANT SIZE [IN]	20" - 22"	21" - 23"	22" - 25"	23" - 26"	25" - 28"	27" - 30"	29" - 32"	30" - 34"	32" - 36"	34" - 38"	36"+
[CM]	51 - 56	53 - 58	56 - 64	58 - 66	64 - 71	69 - 76	74 - 81	76 - 86	81 - 91	86 - 97	91+

COLORS

GOAL SWATCHES



DS S20 BAUER SPEED GOAL PANT

SENIOR	[1057893]	S, M, L, XL
INTERMEDIATE	[1057895]	S, M, L
JUNIOR	[1057894]	S/M, L/XL

MINIMUM OF 12 UNITS PER PANT / SHELL TYPE
DIRECT SHIP ITEMS: RUSH 60 DAYS

FEATURES AND TECHNOLOGY

Construction 2 Belt system
Leg protection - dynamic 2-flex with double adjustment pillows
Extension fit loop +1
Tucked free-flex (skate lace closure)

Colors Custom color menu

Embellishments Direct Embroidered Bauer logo
Embroidered Patch Team logo



S20 BAUER ELITE GOAL PANT

SENIOR	[1056879]	S, M, L, XL
SENIOR MTO	[1056547]	S, M, L, XL
INTERMEDIATE	[1056738]	S, M, L
INTERMEDIATE MTO	[1056548]	S, M, L

FEATURES AND TECHNOLOGY

Construction 2 Belt system
Leg protection - dynamic 2-flex with double adjustment pillows
Extension fit loop +1
Tucked free-flex (skate lace closure)

Colors Black, MTO - Navy and Red

Embellishments Direct Embroidered Bauer logo



CUSTOM GOAL PANT SHELL

SENIOR DS	[1041431]	S, M, L, XL, XXL
INTERMEDIATE DS	[1041432]	S, M, L

MINIMUM OF 12 UNITS PER PANT / SHELL TYPE
DIRECT SHIP ITEMS: RUSH 60 DAYS

FEATURES AND TECHNOLOGY

Construction Abrasion-resistant hip overlay (800 denier nylon/420 shell); Shell size is typically one size larger than pant size

Colors Custom color menu

Embellishments Direct Embroidered Bauer logo
Embroidered Patch Team logo



BAUER GOAL SHELL

SENIOR	[1048526]	S, M, L, XL, XXL
INTERMEDIATE/JR	[1048527]	S, M, L

FEATURES AND TECHNOLOGY

Construction Abrasion-resistant hip overlay (800 denier nylon/420 shell); Shell size is typically one size larger than pant size

Colors Black, Navy, Blue, Red

Embellishments Direct Embroidered Bauer logo



PADS	[1056776]	S, M, L
CATCH-GLOVE	[1056778]	REG/FRT
BLOCKER	[1056782]	REG/FRT
CHEST PROTECTOR	[1056932]	S/M, M/L
PANTS	[1056708]	S/M, L/XL
STICK	[1056847]	20 LEFT

PRODIGY

Inspired by every youth hockey player's dream of playing like the pros, the BAUER PRODIGY™ collection is built exclusively for them. The combination of lightweight materials, composite durability, and scaled down size delivers the right amount of performance on the ice. The PRODIGY™ badge represents unmatched value on the shelf, and a youth specific design that allows every young player to focus on enjoying the game.

PADS



FEATURES AND TECHNOLOGY

- Features**
- 1-2-3 Parent friendly strap system
 - Soft flex core insert
 - Stretch toe attachment toe
 - Soft flex + boot strap
 - Ivory nash knee landing
 - Adjustable knee wing
 - Includes youth knee guard on pads

Colors Black & White

CATCH GLOVE



FEATURES AND TECHNOLOGY

- Features**
- Made up from synthetic leather
 - One piece soft flex cuff
 - Double T-Trap
 - Free flex backhand
 - Nash liner

Colors Black & White

BLOCKER



FEATURES AND TECHNOLOGY

- Features**
- Dual density foam blocker board
 - 2-piece flex side plate
 - Ivory nash-lowered 1.5cm for easy seal palm
 - Free flex finger protection
 - Velcro closure cuff
 - Nash liner

Colors Black & White

CHEST PROTECTOR



FEATURES AND TECHNOLOGY

- Features**
- 2-point collar and velcro arm adjustment fit
 - Floating sternum
 - 3-piece belly with extended wrap
 - Optimized X2.9 elbow
 - Dynamic 2-flex arm floaters
 - Thermomax liner
 - Dual density foam forearm, bicep and shoulder cap

Colors Black

PANTS



FEATURES AND TECHNOLOGY

- Features**
- Mid profile floating spinal
 - Dual inner/outer belt
 - Skate lace closure pelvic
 - F1 Protection flex pad hip
 - Loop for knee guard knee integration
 - Thermomax liner

Colors Black & White

STICK



FEATURES AND TECHNOLOGY

- Features**
- Carbon wrap paddle construction ergo paddle
 - Flat paddle with carbon class construction
 - Double concave with carbon wrap shaft
 - Carbon glass blade

Colors Black & White

SIZING CHARTS

BAUER PRODIGY (Measurements in US Standard & Metric)

SIZE		S	M	L
WEIGHT	[LBS]	35 - 45	45 - 60	60 - 70
HEIGHT	[IN]	3'0" - 3'6"	3'5" - 3'11"	3'1"-10 - 4'4"

HAND SIZE	[IN]	4.5" - 5.5"
	[CM]	11.5 - 14



UNIFORMS



FLEX PRACTICE JERSEYS

COLOR	SR MATERIAL #	SR SIZES	YTH MATERIAL #	YTH SIZES
Black	[1054884]	XS/S, M, L, XL, XXL, AGC	[1054925]	XS/S, M/L, YGC
White	[1054921]	XS/S, M, L, XL, XXL, AGC	[1054931]	XS/S, M/L, YGC
Silver	[1054924]	XS/S, M, L, XL, XXL, AGC	[1054936]	XS/S, M/L, YGC
Blue	[1054886]	XS/S, M, L, XL, XXL, AGC	[1054926]	XS/S, M/L, YGC
Gold	[1054887]	XS/S, M, L, XL, XXL, AGC	[1054927]	XS/S, M/L, YGC
Red	[1054888]	XS/S, M, L, XL, XXL, AGC	[1054928]	XS/S, M/L, YGC
Kelly	[1054890]	XS/S, M, L, XL, XXL, AGC	[1054929]	XS/S, M/L, YGC
Navy	[1054922]	XS/S, M, L, XL, XXL, AGC	[1054933]	XS/S, M/L, YGC
Orange	[1054923]	XS/S, M, L, XL, XXL, AGC	[1054934]	XS/S, M/L, YGC

FEATURES AND TECHNOLOGY

Fabric Content	100% POLYESTER (Weight 160g/m2)
Fit	Hockey fit
Features	Entry level practice jersey Available in 9 colors Bauer logo
Customization	Can be post embellished



FLEX PRACTICE SOCKS

COLOR	SR MATERIAL #	SR SIZES	YTH MATERIAL #	YTH SIZES
Black	[1054598]	S/M, L/XL	[1054577]	S/M, L/XL
White	[1054597]	S/M, L/XL	[1054576]	S/M, L/XL
Silver	[1054579]	S/M, L/XL	[1054567]	S/M, L/XL
Blue	[1054594]	S/M, L/XL	[1054573]	S/M, L/XL
Gold	[1054592]	S/M, L/XL	[1054582]	S/M, L/XL
Red	[1054595]	S/M, L/XL	[1054574]	S/M, L/XL
Kelly	[1054591]	S/M, L/XL	[1054570]	S/M, L/XL
Navy	[1054596]	S/M, L/XL	[1054575]	S/M, L/XL
Orange	[1054580]	S/M, L/XL	[1054569]	S/M, L/XL

FEATURES AND TECHNOLOGY

Fabric Content	100% POLYESTER (Weight 160g/m2)
Fit	Hockey fit
Features	Entry level practice sock Available in 9 colors Bauer logo



SIZING CHARTS: FINDING THE RIGHT FIT

FLEX SERIES - PRACTICE JERSEYS (Measurements in US Standard & Metric)

SIZE	YOUTH		SENIOR					GOAL		
	YXS/S	YM/L	AXS/S	AM	AL	AXL	AXXL	YGC	IGC	AGC
CHEST [IN]	19"	22.5"	25.25"	26.5"	27.5"	29.125"	30.75"	25.5"	26.5"	32.375"
1" Below Arm Hole [CM]	48.3	57.2	64.1	67.3	69.9	74	78.1	64.8	67.3	82.2
FRONT BODY LENGTH [IN]	24.5"	27"	29"	30"	31"	32"	33"	29"	30"	34"
High Point Shoulder [CM]	62.2	68.5	73.7	76.2	78.7	81.3	83.8	73.7	76.2	86.4
SLEEVE LENGTH [IN]	25"	26.5"	31.5"	34.25"	35"	35.75"	36.5"	29"	33.25"	35"
Center Back Neck [CM]	63.5	67.3	80	87	89	90.8	92.7	73.7	84.5	89

FLEX - PRACTICE SOCKS (Measurements in US Standard & Metric)

SIZE	YOUTH		SENIOR	
	YS/M	YL/XL	AS/M	AL/XL
FRONT & BACK LENGTH [IN]	20"	24"	28"	30"
From Top Edge to Hem [CM]	50.8	60.7	71.1	76.2
KNEE [IN]	8.25"	9.5"	10.5"	11.25"
Width [CM]	21	24.1	26.7	28.6
TOP OPENING WIDTH [IN]	7.75"	9"	10"	10.75"
Relaxed [CM]	19.7	22.9	25.4	27.3
TOP OPENING WIDTH [IN]	10.25"	11.5"	12.5"	13.25"
Extended [CM]	26	29.2	31.8	33.7
SHIN PAD [IN]	9 - 10"	11 - 13"	14 - 15"	16 - 17"
Size Reference [CM]	22.9 - 25.4	27.9 - 33	35.6 - 38.1	40.6 - 43.2

COLORS

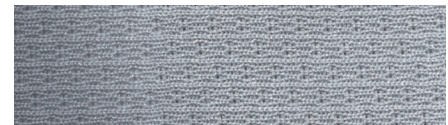
FLEX SWATCHES



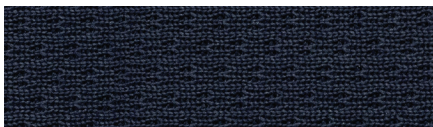
Black



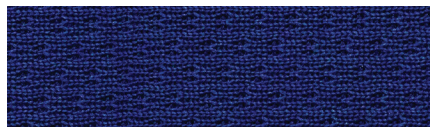
White



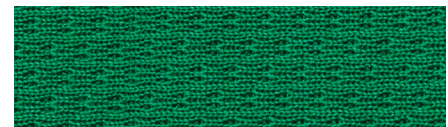
Silver



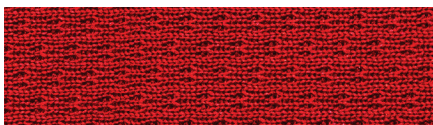
Navy



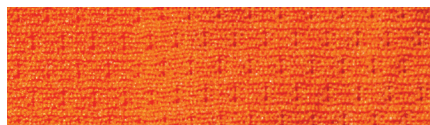
Blue



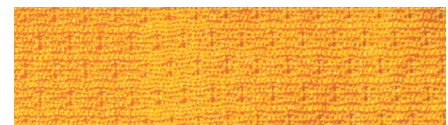
Kelly



Red



Orange



Gold

NEXUS LEAGUE GRIP STICK

NEXUS LEAGUE STICK

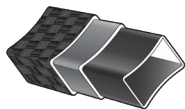
DEVELOPED EXCLUSIVELY FOR ELITE LEVEL TEAMS, THIS BAUER NEXUS TEAM STICK IS DESIGNED WITH HIGH LEVEL PERFORMANCE IN MIND. BUILT ON THE NEXUS FOUNDATION OF POWER, THIS STICK MAXIMIZES EVERY SHOT WITH AN AMPLIFIED MID-KICK THAT INCREASES ENERGY TRANSFER WHILE SHOOTING. THIS EXCLUSIVE STICK IS PRICED SO THAT YOUR ENTIRE TEAM CAN PERFORM TO ITS HIGHEST LEVEL.



KEY TECHNOLOGIES:



Full 15K Carbon Fiber



Ultra light weight premium carbon fiber with high end durability properties.

Sweet Spot Technology



BAUER has re-engineered the use of carbon fiber within the structure to allow for an easier and smoother energy transfer while shooting. This is maximized while taking mid-motion wrist shots and slap shots.

Power Sense 2 Blade Core



The POWER SENSE CORE 2 blade is constructed with the next evolution of SENSE technology. An updated process has integrated SENSE layer materials with TeXtreme fiber on the outer portion of the blade. By integrating SENSE layer materials, overall blade weight is reduced and balance is improved while managing key dampening performance attributes of SENSE technology.

Monocomp Construction



Our industry-leading single molding process ensures product and performance consistency. By removing excess material like overlapping layers, resin and foam waste, the balance of the stick is improved and overall weight is reduced.

STICK DETAILS

MATERIAL NUMBERS	MATERIAL DESCRIPTION	L/R	PATTERNS
1055474	S19 Nexus League Grip Stick SR - 95	L/R	P92, P88, P28, P92M
1055472	S19 Nexus League Grip Stick SR - 87	L/R	P92, P88, P28, P92M
1055471	S19 Nexus League Grip Stick SR - 77	L/R	P92, P88, P28, P92M
1055477	S19 Nexus League Grip Stick SR - 70	L/R	P92, P88, P28, P92M
1055475	S19 Nexus League Grip Stick INT - 65	L/R	P92, P88, P28

LOGO REQUESTS

CUSTOMIZER LOGO REQUEST

A HOW TO SUBMIT A LOGO

When submitting a logo for a team's locker, the logo must be in a vector format (e.g.: .Ai / .Eps / .Pdf). The logo within this file should be converted to vectors and be an editable file.

To submit a logo, please fill out the logo request form and email to: logorequests@bauer.com

B COLOR SPECIFICATIONS

During the logo submission process, team colors need to be clearly specified. Our customizer offers a wide range of colors so in order to make sure that team colors are correct, they need to be submitted properly.

When filling out the logo request form, please identify the team's colors by name or by using the Pantone number, if available, in the notes section. Pantone numbers are preferred as they are the industry standard for the color matching process.

Please note: colors on screen may look different than physical samples. To ensure a close match, please try to provide as much information as possible when submitting logos so that we can do our best to match the team's colors and expectations.

i) UNACCEPTABLE FILES



Non-vectorized artwork is not ideal due to the fact that they are generally low resolution and become blurry / pixelated when scaled up

NON-ACCEPTABLE FILES

.JPG / .BMP / .GIF / .TIFF / .PNG

i) ACCEPTABLE FILES



Vector artwork allows you to scale an image to any dimension without losing any quality.

ACCEPTABLE FILES

.AI / .EPS / .PDF / .SVG

CORPORATE OFFICES

UNITED STATES
100 DOMAIN DRIVE
EXETER, NH 03833
U.S.A

CANADA
6925 CENTURY AVENUE, SUITE 6000
MISSISSAUGA, ON L5N 0E3
CANADA

EUROPE
LUDWIGSPLATZ 18
83022 ROSENHEIM
GERMANY

NORDICS
GRIMBOASEN 10A
SE-41749 GOTHENBURG
SWEDEN

© 2020 BAUER HOCKEY, INC. AND ITS AFFILIATES. ALL RIGHTS RESERVED.
BAUER, RE-AKT, SUPREME, TOTALONE, ONE80, X7.0, THERMO MAX AND MAX-SORB ARE TRADEMARKS OF BAUER HOCKEY INC., AND/OR ITS AFFILIATES.
VAPOR IS A REGISTERED TRADEMARK OWNED BY NIKE, INC. AND/OR ITS AFFILIATES AND USED UNDER LICENSE.
MICROBAN IS A REGISTERED TRADEMARK OF MICROBAN PRODUCTS COMPANY.
NEW ERA, 39THIRTY, 59FIFTY, 9FIFTY, 9FORTY, 9TWENTY, NE AND THE NEW ERA FLAG LOGO ARE ALL TRADEMARKS OF THE NEW ERA CAP COMPANY.
HDO OPTICS TRADEMARK AND PATENTED TECHNOLOGY USED UNDER LICENSE FROM OAKLEY.
PORON AND PORON XRD ARE REGISTERED TRADEMARKS OF ROGERS CORPORATION.
3M THINSULATE AND SCOTCHGUARD ARE REGISTERED TRADEMARKS OF 3M.
YKK IS A REGISTERED TRADEMARK OF YKK CORPORATION.

